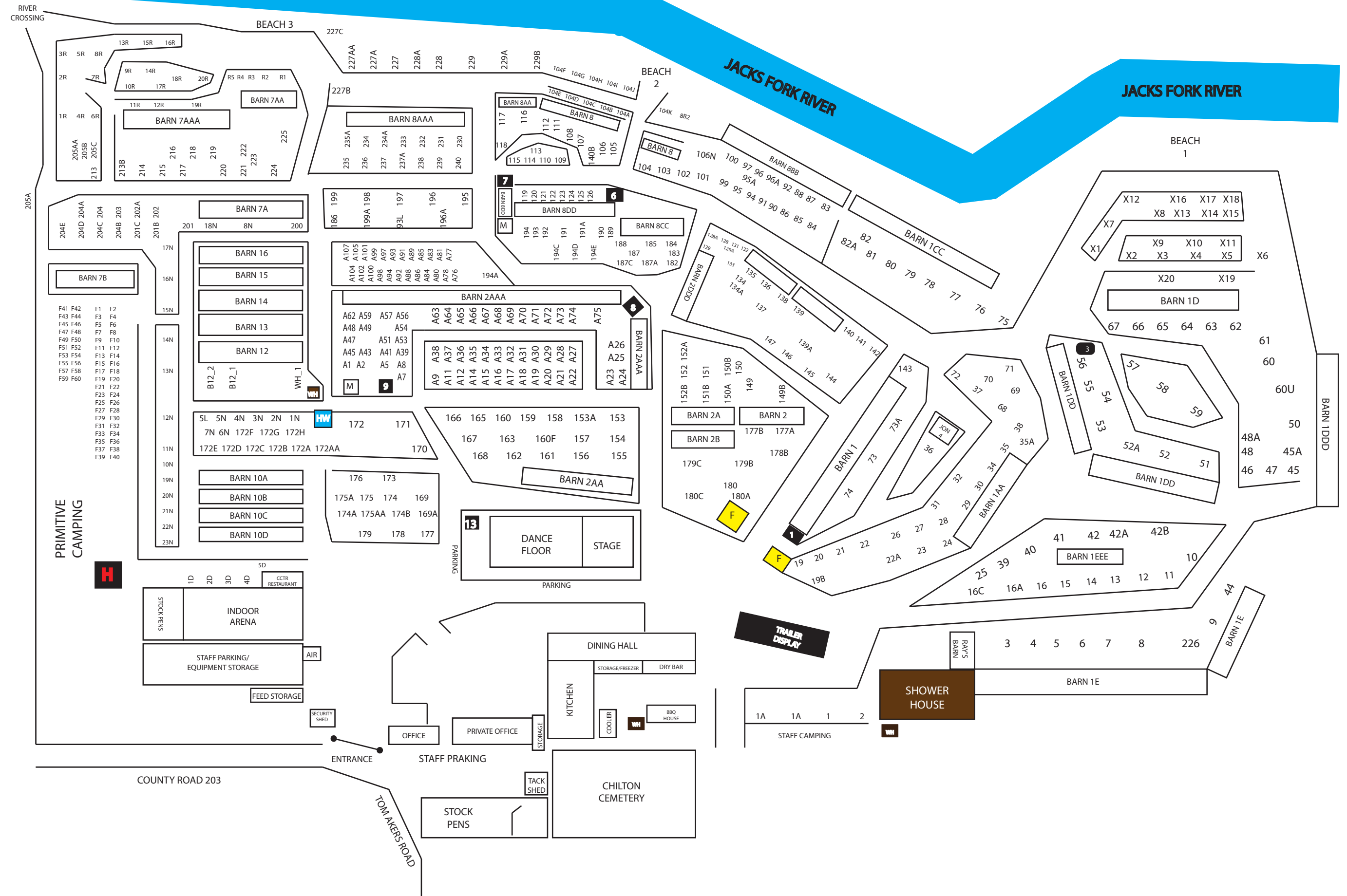


**JACKS FORK RIVER**

**JACKS FORK RIVER**

**JACKS FORK RIVER**

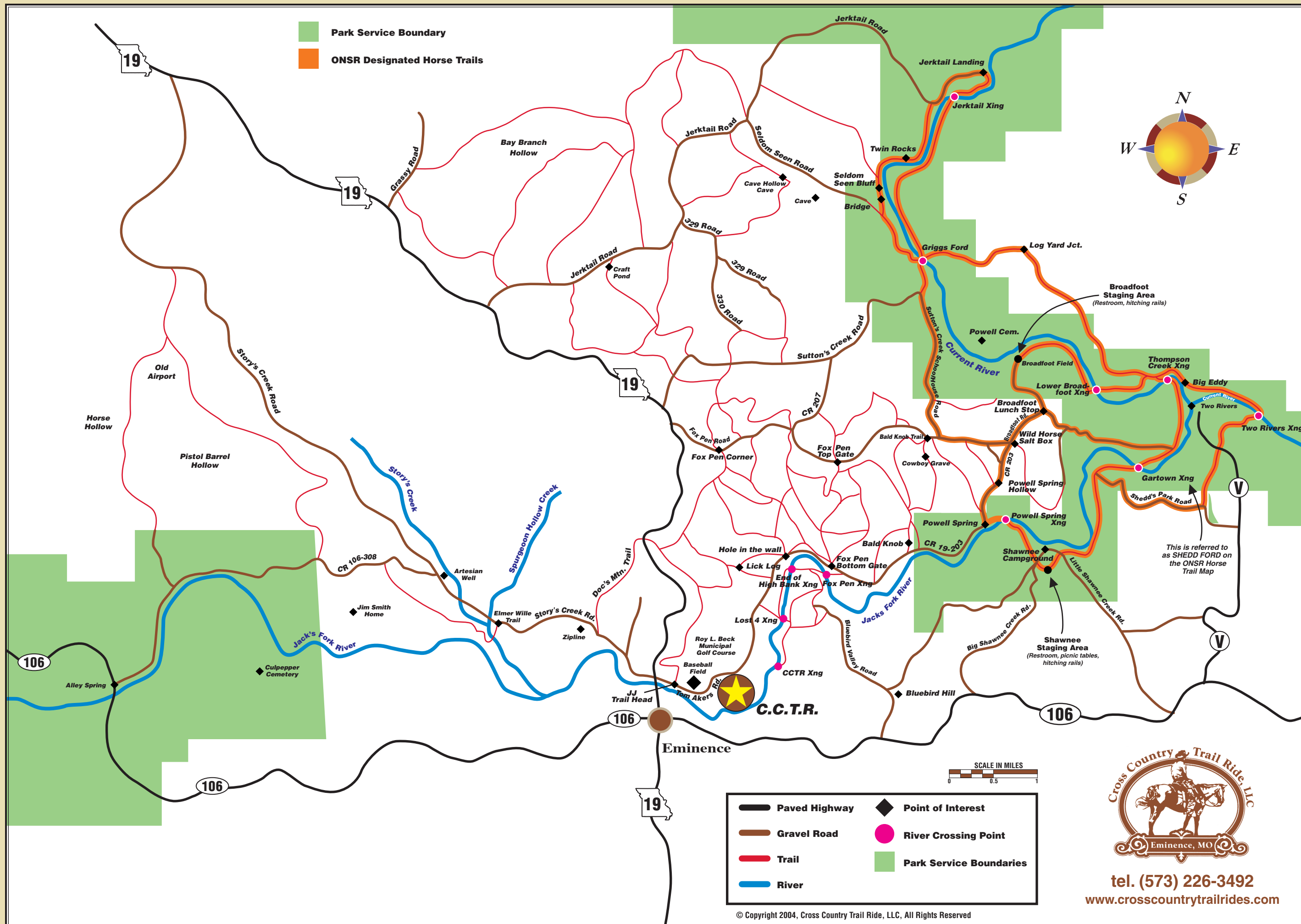


**MAP LEGEND**

- HELIPAD
- HORSE/TRAILER WASH
- FARRIER
- WELL HOUSE
- OUT HOUSE

# TRAIL ETIQUETTE

- Please ride on designated trails only!
- Use designated river crossings only! **DO NOT ATTEMPT TO CROSS ANY STREAM OR RIVER DURING PERIODS OF HIGH WATER!**
- Be courteous to other riders and trail users. Do not assume that you are the only one using the trail system.
- Do not ride in areas that have been designated, "NO HORSES BEYOND THIS POINT" or "NO HORSES ALLOWED IN THIS AREA". We have several private landowners who allow us to ride across their property. They have designated areas in which they do not want horse traffic. Please abide by the signs. **DO NOT ABUSE THE PRIVILEGE YOU HAVE BEEN GIVEN!**
- Ride responsibly. Do not climb up or ride down steep inclines. The trails are all marked. Riding off the designated trails only increases erosion and can cause harm to you or your animal.
- Always release tie downs before crossing the river. Even the shallowest crossing can be dangerous for an animal with a tie down.
- If you are taking snacks or drinks on the trail with you, bring your trash back with you. No one likes to look at trash while they are riding, they would much rather see the beautiful country which they are riding through.



<span style="color: black;">—</span> Paved Highway	<span style="color: black;">◆</span> Point of Interest
<span style="color: brown;">—</span> Gravel Road	<span style="color: magenta;">●</span> River Crossing Point
<span style="color: red;">—</span> Trail	<span style="color: green;">█</span> Park Service Boundaries
<span style="color: blue;">—</span> River	



tel. (573) 226-3492  
 www.crosscountrytrailrides.com